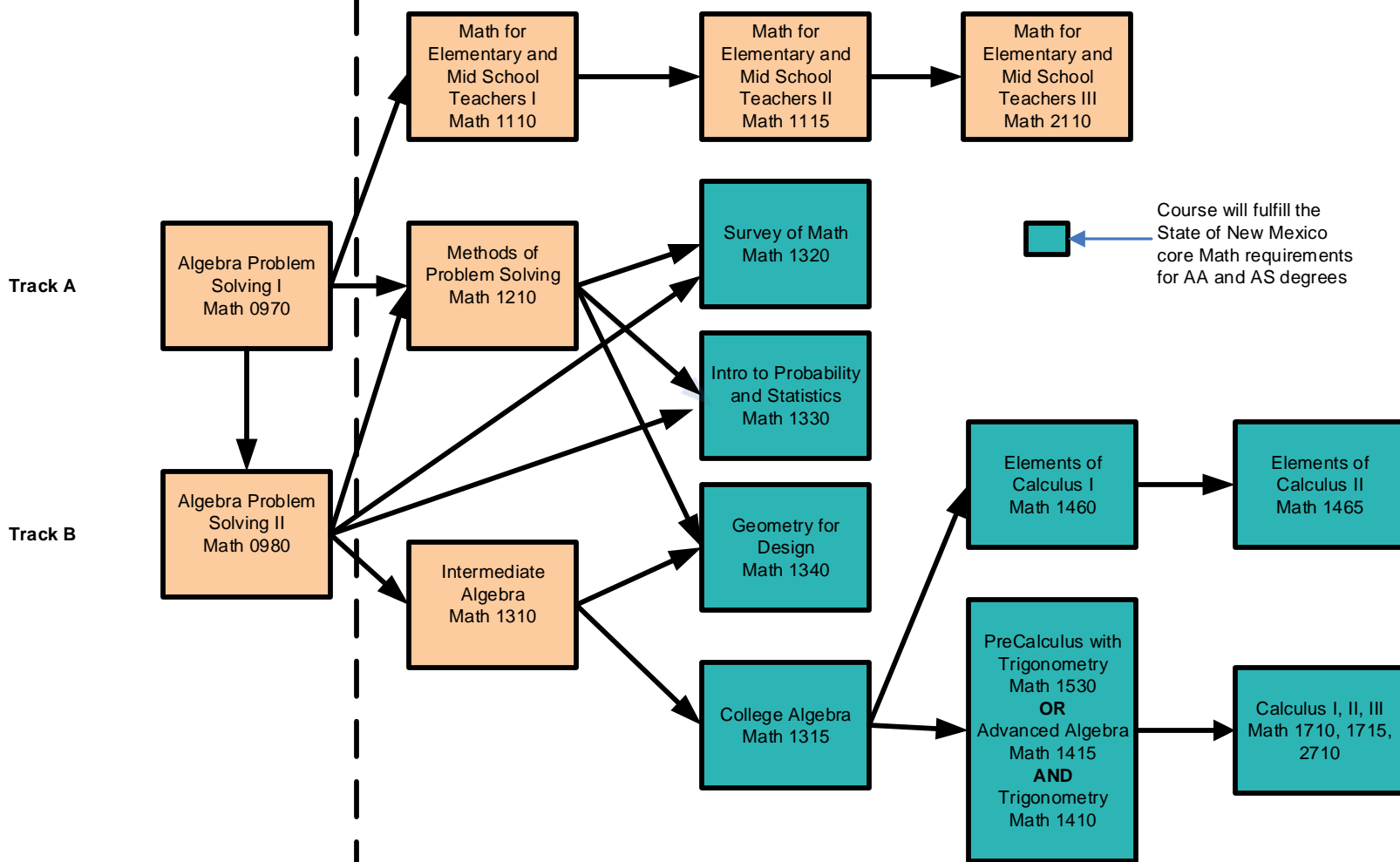


# Central New Mexico Community College – Math Course Sequence

**Developmental Math**  
School of Adult and General Education

**College Level Math**  
School of Math, Science, and Engineering

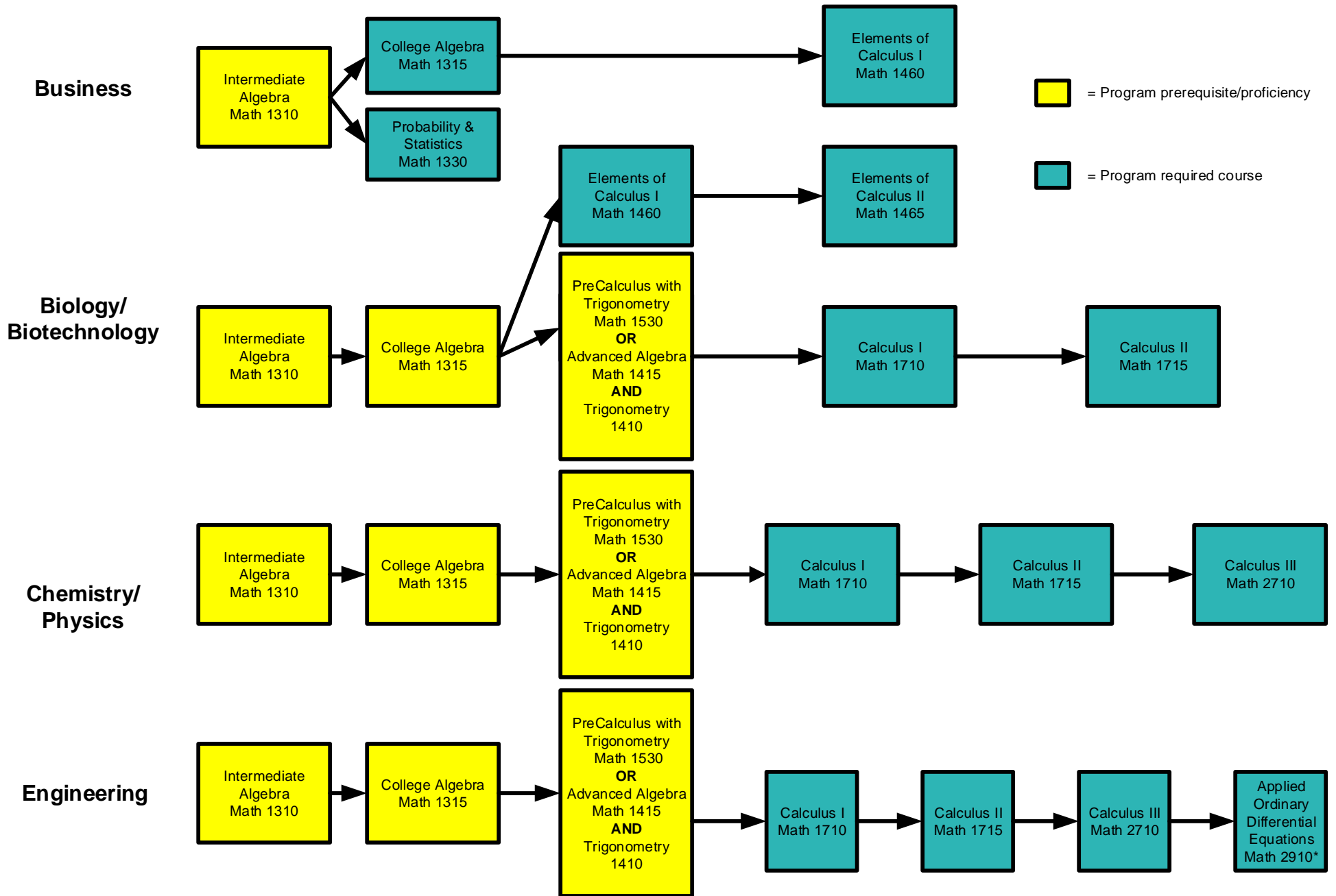


Course will fulfill the State of New Mexico core Math requirements for AA and AS degrees

Notes:  
 1) Track A indicates non-algebra track  
 2) Track B indicates algebra track  
 3) For Algebraic Problem Solving I and II, test scores determine placement into Math 0970 and Math 0980.  
 4) This is not intended to be a comprehensive list of Math courses. It is a guide for students who need to identify the sequence of courses for fulfilling program requirements or for transfer. Please consult with an academic advisor for specific information pertaining to your program.

Transfer notes:  
 1) Students who intend to transfer to a four-year school should determine what level of math will fulfill core and major requirements at the transfer institution.  
 2) In general, the classes in blue fulfill core requirement for AA, AS and transfer. However, students should be aware that many majors have specific Math requirements.  
 3) For students who are unsure of their intended major, or transfer college, Math 1315 (Track B – Algebra) is recommended because it is the most universal requirement for a bachelor-level degree.  
 4) Math 1210 does not have a direct UNM equivalency, however, it can be used to fulfill the college level algebra course for the NMNEC dual enrollment Bachelor of Science in Nursing only.

# Central New Mexico Community College – Calculus Sequence by Major



**Notes:**

This is not intended to be a comprehensive list of Math courses. It is a guide for students who need to identify the sequence of courses for fulfilling program requirements. Please consult with an academic coach for specific information pertaining to your program.

\* Math 2910: Course is only approved to satisfy Math 316 at UNM for Engineering Majors.

Students who intend to transfer to a four-year school should determine the appropriate path to fulfill program requirements at the transfer institution.